

TUBULAR MOTOR – NEMO

Instruction and installer remarks

User's safety

WARNINGS

FOLLOWING ALL POINTS BELOW IS ESSENTIAL FOR USER'S SAFETY.

PLEASE KEEP THIS INSTRUCTION.

INCORRECT INSTALLATION MAY LEAD TO AN ACCIDENT.

- Motor series DM45ED shall be used to roll and unroll fabrics on awnings and whatever other application is incorrect and shall be prohibited.
- Motor parameters shall be selected rightly in accordance with awnings or roller blind parameters.
- Tubular motor is designed to work constantly through 4 min. After such period of time a thermal protection turns off the motor for about 20 minutes.
- Service and repairs can be carried out only by an entitled person.
- Installations and electric connections must be carried out according to safety regulations by an entitled person.
- Claims and complaints will not be taken into consideration if the damage appears as a consequence of wrong connection, wrong general usage or motor overload.

TUBULAR MOTOR NEMO RED series

MODEL DM45ED

1. Marking board rating plate:

Moment obrotowy – torque

Nominal voltage – napięcie znamionowe

Power Consumption - pobór mocy

Motor Weight – waga silnika

Electricity – prąd elektryczny

Frequency – częstotliwość

Maximum work time of motor – maksymalny czas pracy silnika

Type of motor – model silnika

Rpm – predkość obrotowa

Diameter – średnica

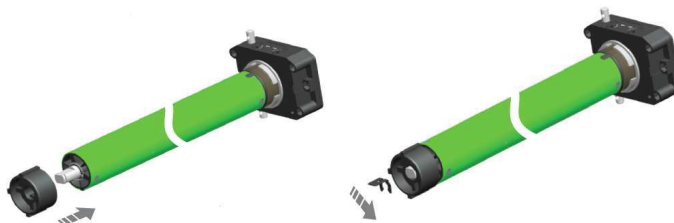
Motor certificate – certyfikat silnika

Isolation class – klasa izolacji

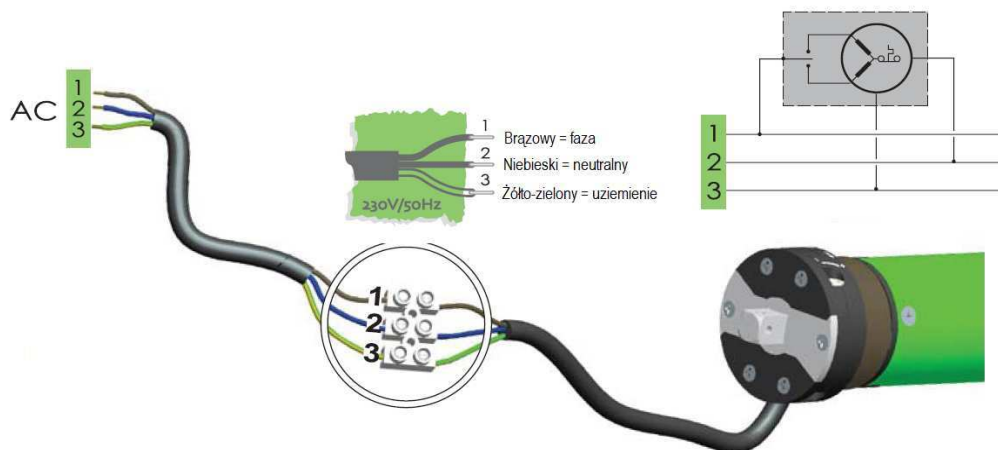
Protection degree – stopień ochrony

2 Installation.

a) Adaptor and drive pulley assembly



b) Electrical connection



- In order to prevent engine failure or incorrect operation it is necessary to select a proper switch type and parameters in relation to electric parameter of engine (see engine parameters on rating place).
- When you install engine outdoors it is necessary to protect power cable with additional cover.



UWAGA

WARNING

- Connect cables according to drawing in this instruction. If you have any doubts, NEVER connect cables on your own but ask for an advice of a specialist.
- Engine shall not be poured with any liquid substance, exposed to damage or dropped down. Do not drill and use any screws on the engine.
- Engine cover safety class: IP44. That means, that the engine is protected from infiltration of solid dirt and water drops falling from any angle. An incorrect cable installation may lead to a permanent danger of a water contact with the engine cover. Because of that the engine's power supply cable shall be installed in such a manner, that the rain drops will fall below the engine's seal. (like on the figure below)



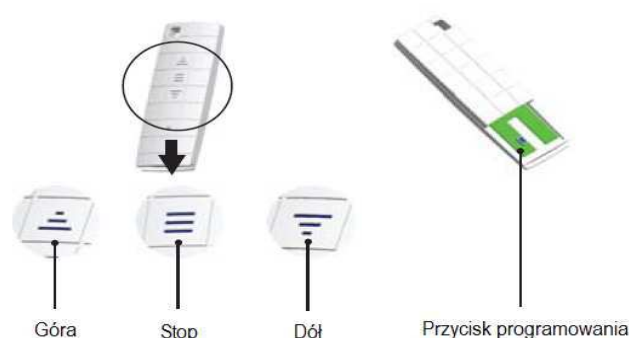
3. Engine's basic functions.

Nemo RED series engines have an built-in control unit, electronic limit switch and automatic fabric tension system. Engine is operated with a remote control.

Nemo RED series engines are able to keep in memory up to 20 different control units. Radio control is performed on the frequency of 433.92 Mhz. Remote control's range is limited to 35m indoors and up to 200m outdoors.

4. Engine's programming.

Remote control's push buttons:



1. UP/ 2. STOP/ 3. DOWN/ 4. PROGRAMMING PUSH BUTTONS



Next steps of programming (next presses on the remote control button) shall be performed in intervals that are not longer that 10 seconds. When one performs the programming procedure **all the earlier programmed remote controls will be deleted from the engine's memory** as well as the limit switch positions.

A. Programming of a new remote control.



Turn off the power supply for more than 10 seconds

Turn on the power supply

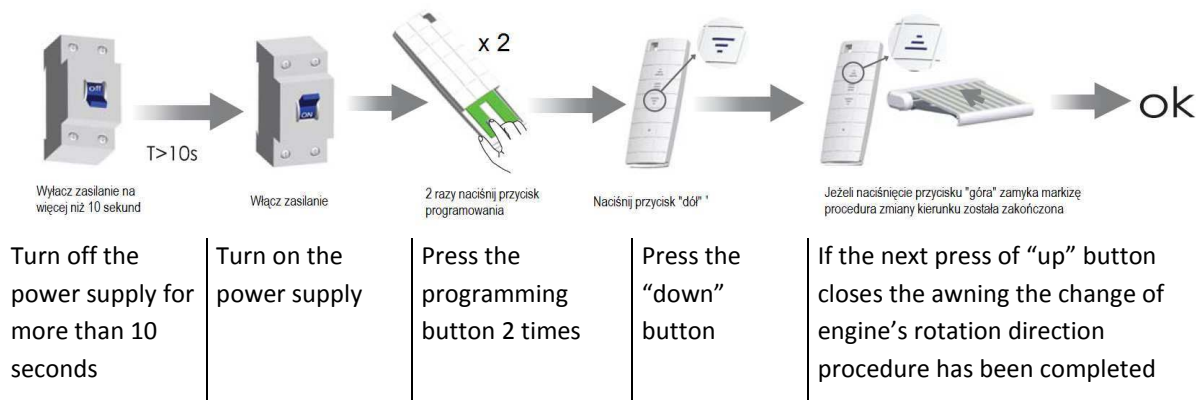
Press the programming button 2 times

Press the "up" button

If the next press of "up" button closes the awning the remote control programming procedure has been completed

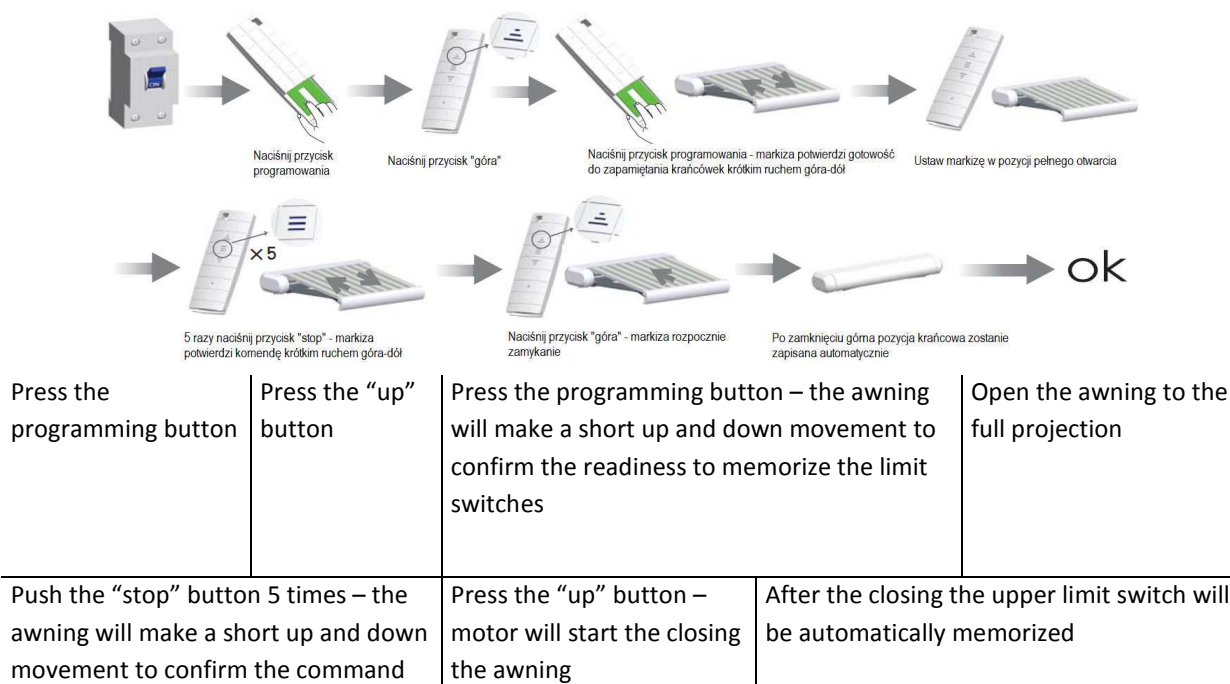
B. Change of the engine's rotation direction.

If after the remote control programming procedure completion the "up" press button opens the awning one shall start the change of engine's rotation direction procedure.

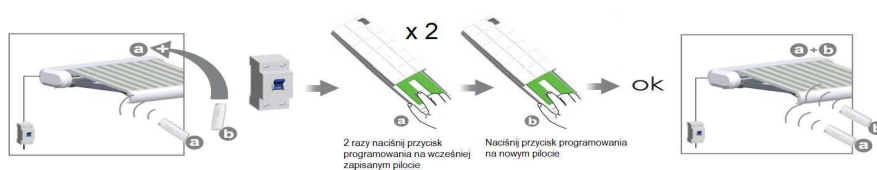


C. Adjustment of the limit switch positions

Always start adjustment of the limit switch positions with setting "down" (fully opened) position. The closing position will be automatically memorized.



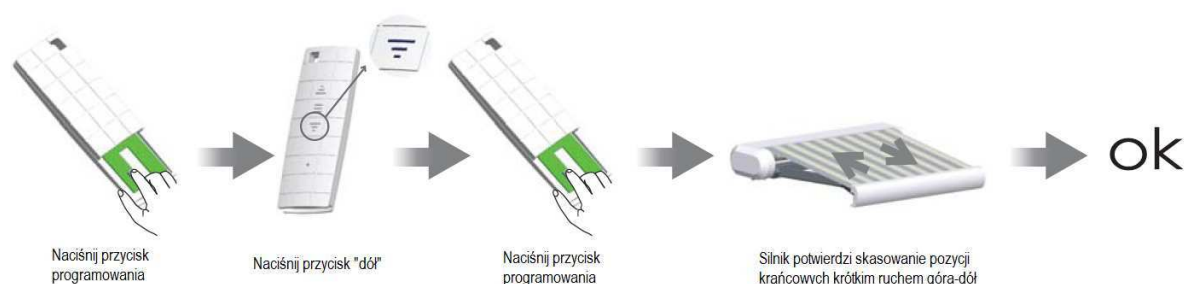
D. Programming of an additional (new) remote control



Press the Programming button 2 times on the previously programmed remote control

Press the programming button on the new remote control

E. Deletion of the limit switches.



Press the programming button

Press the "down" button

Press the programming button

The engine will make a short up and down movement to confirm the deletion of limit switches

F. Deletion of the engine's memory.



Press the programming button

Press the button "Stop"

Press the programming button

Press the programming button

Press the "stop" button

Press the programming button

5. Troubleshooting.

	Problem	Possible reason	Solution to the problem
1	The engine works only in one direction.	Failure of the limit switches completion procedure.	Perform the limit switches procedure.
2	The engine does not work or	a. Too low power supply	a. Change the power supply source

	works very slowly.	voltage. b. Connection error. c. Engine's overload.	into such that is in accordance with the engine's requirements. b. Check the cable's connection. c. Change the engine to such that is of higher power value.
3	The engine stops after a short period of work.	The thermal protection blocked the engine due to too long work	The engine will start to work when it cools down – after about 20 minutes.
4	Too loud work of the awning.	Incorrect length of the rolling tube.	Change the brackets mounting place or the length of the rolling tube.