

a Programming the intermediate position (IP)

Set the blind to its **UP limit** before programming in order to always have the same adjustment.



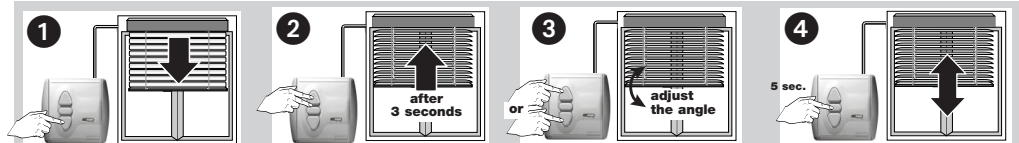
• Move the blind at its **UP limit** with the **▲** button and immediately press the **■** button briefly.

• Press the **▼** and **■** button simultaneously until the blind begins to move **DOWN**.

• Stop the blind at the intermediate position you wish.
If necessary, adjust this position with the **▲** or **▼** buttons.

• Press the **■** button more than 5 sec.
→ The blind jogs briefly (UP/DOWN), the intermediate position is recorded.

b Programming the automatic slat tilting



• Move the blind downward to get the slats closed.

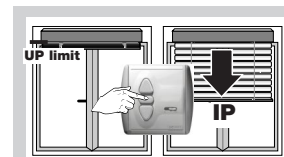
• Press simultaneously on the **▲** and **■** button until the blind begins to move briefly **UP**.

• Adjust the tilt angle with the **▲** or **▼** buttons.

• Press the **■** button more than 5 sec.
→ The blind jogs briefly (UP/DOWN), the tilt angle is recorded.

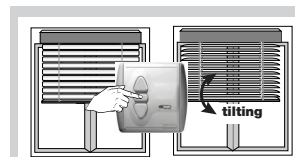
c Operating

If IP only has been programmed



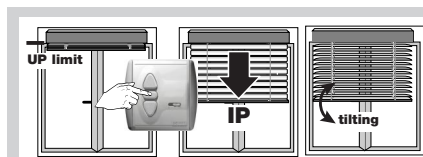
• Press briefly the **■** button while the blind is at its **UP limit**.
→ The blind will move and stop at the intermediate position.

If tilting only has been programmed



• Press briefly the **■** button while the blind is closed (after a DOWN movement).
→ The blind will tilt at the pre-set angle.
Note : after an UP movement the blind does not tilt.

If both IP and tilting have been programmed



• Press briefly the **■** button while the blind is at its UP limit.
→ The blind will move, stop at the intermediate position and tilt at the pre-set angle.
Note : after a DOWN movement the blind only tilts.

d Delete the intermediate position/automatic tilting

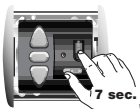
If you record a new IP or a new tilting function, this will automatically erase the previous one.

If you want to erase without recording a new one, Press briefly on the **■** button to reach the IP or to get the tilting (or both), then:

- To erase the intermediate position, press the **▼** and **■** buttons **simultaneously** for more than 5 seconds.
- To erase the tilting, press the **■** and **▲** buttons **simultaneously** for more than 5 seconds.
- To erase both, just press the **■** button for more than 5 seconds.

→ The blind jogs briefly (UP/DOWN) indicating that **CENTRALIS uno RTS VB** has deleted the intermediate position and/or the tilting.

5 Complete reset



To completely reset the **CENTRALIS uno RTS VB**, press its **PROG** button for more than 7 seconds.
This will erase all of the programmed controls, the intermediate position and the automatic tilting.
→ The blind jogs briefly (UP/DOWN), the memory of the **CENTRALIS uno RTS VB** is cleared.

Trouble shooting guide

Nothing works:

- Check the wiring.
- Check the battery of the transmitter.
- Check that the transmitter has been properly recorded.
- Check for any other possible source of radio interferences.

Phantom intermediate position/slat tilting:

- The programmed IP can only be reached from the UP limit, not when the blind is in another position.
- Be sure to adjust the slat tilting after a down movement when the blind is approximately 3/4 down of the window.

Lost in your programming mode:

- Just make a complete reset and start again (refer to section 5).

INSTALLATION guide

Ref 5100837A

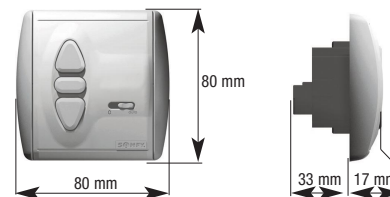


inteo CENTRALIS UNO RTS VB

CENTRALIS UNO RTS VB is a individual control system for AC motor dedicated to external and interior venetian blind applications.

- **CENTRALIS UNO RTS VB** has an integrated radio receiver compatible with the RT and RTS transmitters allowing individual, group and master commands. Up to twelve controls can be recorded in the **CENTRALIS UNO RTS VB**.
- The commands coming from the radio controls can be disabled thanks to the 0/auto switch.
- An automatic intermediate position and a slat tilting operation can be programmed.
- **CENTRALIS UNO RTS VB** is compatible with the EOLIS and SOLIRIS sensors RTS.
Up to three RTS sensors can be memorized in one receiver and one RTS sensor can be memorized in several receivers.

1 Characteristics



- Main supply : 220-240V 50Hz.
- Class II product
- Protection index IP40.
- Output : 250V~ 3A
- Output temporisation : activ for 180s.
- Environmental conditions for use :
- temperature +5°C to +40°C (no condensation allowed).
- pollution degree typical for usual living space.

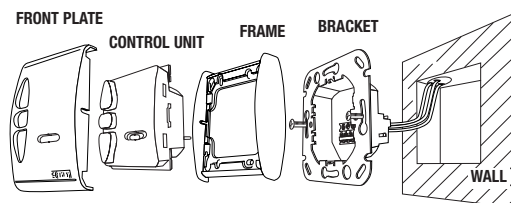
CE Hereby, SOMFY, declares that this equipment is in compliance with the essential requirements and other relevant provisions of Directive 1999/5/EC.
A Declaration of Conformity is available at the web address www.somfy.com/Heading/CE

usable in EU, (CH)

2 Installation

This device must be installed and programmed by qualified installers for whom this instruction is intended. Before connecting the unit, read the instructions carefully.

2.1 Assembly



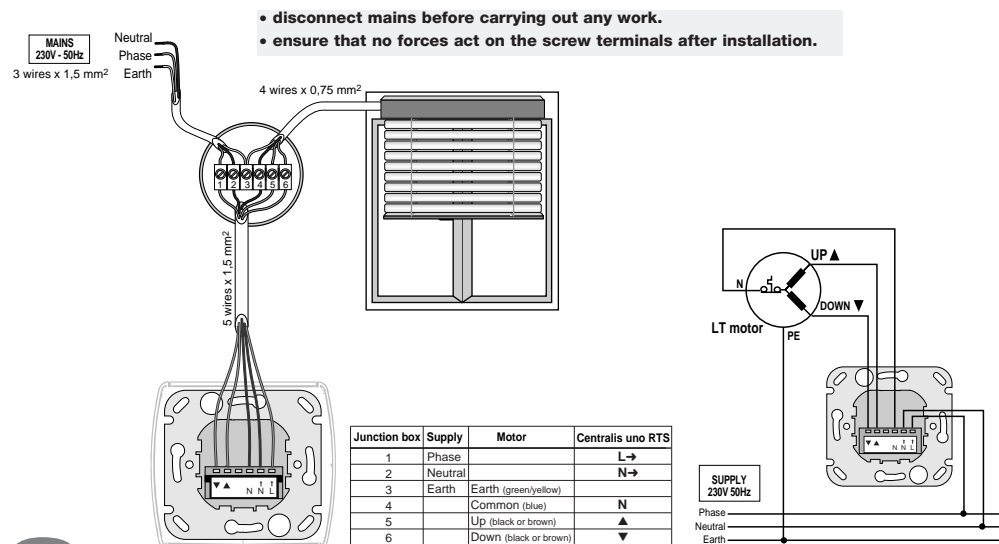
The range of radio control is limited by laws regulating radio devices and by building design.

When planning, please ensure that there is adequate radio reception.

In order not to affect quality of reception, a minimum distance of 30 cm between a **CENTRALIS uno RTS VB** and a radio transmitter should be maintained.

CENTRALIS uno RTS VB should not be installed in the immediate vicinity of metal surfaces. Powerful local transmitter equipment (e.g. cordless headphones) with a transmission frequency identical to the **CENTRALIS uno RTS VB** can affect its function.

2.2 Wiring



3 Radio programming

3.1 Initial installation : record the first control

1

Set the **CENTRALIS uno RTS VB** in its programming mode by pressing the PROG button until the blind jogs briefly (UP/DOWN).

The **CENTRALIS uno RTS VB** will remain ready to record a control for two minutes.

2

RTS control
Press briefly the programming button on the RTS control you wish to record.

RT control
Remove the battery, press briefly the button, replace the battery and press again briefly the button.

→ The blind jogs briefly (UP/DOWN) and the LED of the **CENTRALIS uno RTS VB** blinks during 5 secs. indicating that the control has been recorded.
CENTRALIS uno RTS VB quits its programming mode.

GROUP CONTROL (one transmitter for several receivers)

To program one control in several **CENTRALIS uno RTS VB**, set all the receivers in their programming mode then repeat the same procedure.

It is recommended not to use a RT control as a general control point.

3.2 Record new controls

You can program up to 12 controls to one receiver. If you try to enter a 13th, your instruction will be ignored.

To record several RTS controls in **CENTRALIS uno RTS VB**, repeat the same procedure as described in section 3.1 for each control.

You can also use an already recorded control to set the **CENTRALIS uno RTS VB** in its programming mode

RTS control : press for more than **2 sec.** on the "prog" button.

RT control : remove the battery, press **briefly** the button, replace the battery and press for more than **2 sec.** on the button.

→ The LED of the **CENTRALIS uno RTS VB** lights on and the blind jogs briefly UP and DOWN indicating that the

CENTRALIS uno RTS VB is in programming mode and that you can record a new control.

3.3 Remove a control (on an existing installation)

Press the prog button of the **CENTRALIS uno RTS VB** to enter in programming mode, then press shortly the prog button of the RTS control you wish to remove.

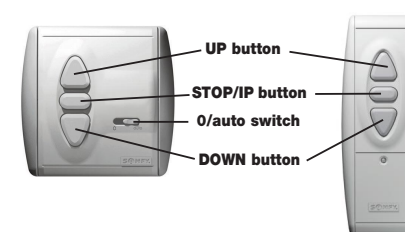
It is also possible to set the **CENTRALIS uno RTS VB** in its programming mode with another RTS control (see 3.2), then press shortly the prog button of the RTS control you wish to remove.

To remove all the controls, do a complete reset of the **CENTRALIS uno RTS VB** (see section 5).

4 Operating

4.1 UP/DOWN/STOP/TILT commands

CENTRALIS uno RTS can be operated by its push-buttons or with a RT/RTS control.
CENTRALIS uno RTS VB offers two different modes to control the venetian blind.



US mode (factory mode)

- Press briefly the ▼ or ▲ buttons to raise or lower the blind.
- Press briefly the ■ button To stop the blind.
- To tilt the slats, press and hold the ▼ or ▲ buttons.
If you hold the control buttons for more than 6 seconds, the blind will start to move continuously up to its end limits.

EU mode :

- To raise or lower the blind, press and hold more than 2 secs. the ▼ or ▲ buttons.
- To stop the blind, press briefly the ■ button.
- To tilt the slats, press briefly the ▼ or ▲ buttons.

The configuration can be changed by pressing for more than 5 secs. on the ■ button of a RTS control just after the power on. The blind jogs, indicating that **CENTRALIS uno RTS VB** has changed the configuration.

4.2 0/auto switch



"auto" position :

All commands from the push buttons of the **CENTRALIS uno RTS VB** (local control) and from the radio controls (master control) are taken into account.

"0" position :

Only the push button commands are taken into account and the radio commands are disabled (This feature allows to isolate a room from the master control). To force the control of the **CENTRALIS uno RTS VB** with radio, the radio command should be longer than 2 sec.

4.3 Wind/Sun/Light functions



In association with the **SOLIRIS/EOLIS sensors RTS** or a **CHRONIS RTS light**, **CENTRALIS uno RTS VB** is able to control and protect the blind according to the sun and wind conditions.

To record a **SOLIRIS/EOLIS RTS** sensor or a **CHRONIS RTS light** in the **CENTRALIS uno RTS VB**, repeat the same procedure as describe in section 3.2 (record a new control).

Refer to the instruction manual of the relevant products for the programming and setting procedures.

4.4 Intermediate position / automatic slat tilting

With the **CENTRALIS uno RTS VB**, it is possible to program an automatic intermediate position (IP) and an automatic tilting of the slats. You can choose to program one or the other, or both. The recording of the intermediate position and the tilting can be made from the **CENTRALIS uno RTS VB** or from a RTS control.