

DD510H

Vibration Sensor Specification

Version NO. : A/00

T Model specification

Technical support

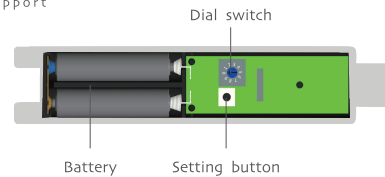


DD510H

- Power supply voltage: DC 3V (AAA dry battery×2)
- Working temperature: -20°C ~ 55°C
- Transmitting power: 10 milliwatt
- Transmission frequency: Bidirectional 433MHz

T Buttons description

Technical support



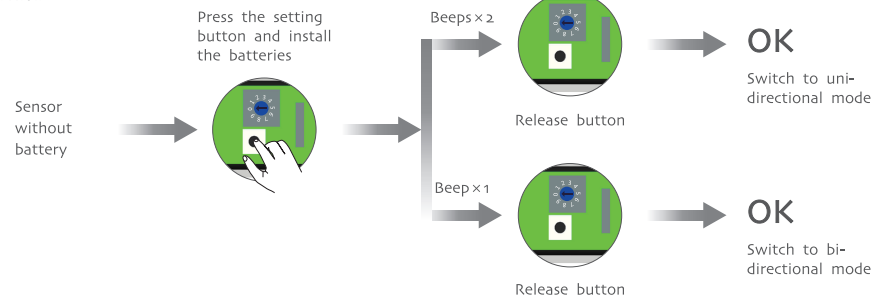
Battery Setting button

- ①If the voltage is less than 2.3V, the buzzer will ring every 5s to remind the user to change the battery; ②Magnet function: the vibration and low voltage are invalid if there is no magnet.

A Mode switch

Additional function

- Bi-directional mode is the factory default mode.



A Vibration sensor programming under uni-directional mode

Additional function

Pairing sensor or additional sensor setting

Dial the switch to 0 and press the setting button once

The receiver is under the pairing/adding emitter status



Beep x 1



Release button

OK

Check the indicator status of receiver, whether the sensor or the additional sensor has been paired

- ①After pairing the motor with DD510H, when there is strong wind, the sensor will send the UP command to close the awning; ②There is 9 levels of sensor sensitivity and the sensitivity gradually decrease from 1 to 9 level, when it's 0 level, there is no sensitivity; ③The vibration sensor will send the UP command to the motor to close the awning once the vibration of the sensor reach the setting sensitivity level, and within 30s, the sensor won't send UP command again if the vibration continued; ④When the sensor under Pairing sensor or additional sensor status, press the UP button of the remote, the awning can be closed.

Send UP command

Dial the switch to 5 and hold the setting button



Beeps x 2



Release button

OK

Once the sensor vibrated and reach the sensitivity level, the sensor will send the UP command.



If press the Up button of the remote, the awning is open, pls switch the direction of the motor.

Send DOWN command

Dial the switch to 9 and hold the setting button



Beeps x 2



Release button

OK

Once the sensor vibrated and reach the sensitivity level, the sensor will send the DOWN command.



If press the DOWN button of the remote, the awning is closed, pls switch the direction of the motor.

A Vibration sensor programming under bi-directional mode

Additional function

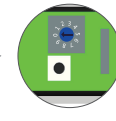
Pairing sensor or additional sensor setting

Dial the switch to 0 and press the setting button once

The receiver is under the pairing/adding emitter status



Beep x 1



Release button

OK

Check the indicator status of receiver, whether the sensor or the additional sensor has been paired



- ①After pairing the motor with DD510H, when there is strong wind, the sensor will send the UP command to close the awning; ②There is 9 levels of sensor sensitivity and the sensitivity gradually decrease from 1 to 9 level, when it's 0 level, there is no sensitivity; ③The vibration sensor will send the UP command to the motor to close the awning once the vibration of the sensor reach the setting sensitivity level, and within 30s, the sensor won't send UP command again if the vibration continued; ④When the sensor under Pairing sensor or additional sensor status, press the UP button of the remote, the awning can be closed.

Send UP command

Dial the switch to 5 and hold the setting button



Beeps x 2



Release button

OK

Once the sensor vibrated and reach the sensitivity level, the sensor will send the UP command.



If press the Up button of the remote, the awning is open, pls switch the direction of the motor.

Send DOWN command

Dial the switch to 9 and hold the setting button



Beeps x 2



Release button

OK

Once the sensor vibrated and reach the sensitivity level, the sensor will send the DOWN command.



If press the DOWN button of the remote, the awning is closed, pls switch the direction of the motor.